

## Easy Care Camp Shirt S535



This classic camp shirt is perfect for upscale service environments. Made from no-fuss fabric, this shirt has faux- coconut shell buttons and it's designed to keep its great looks wear after wear.

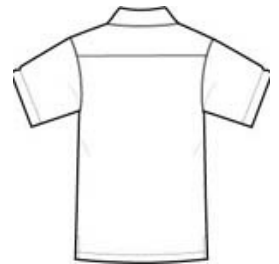
- 75/25 poly/rayon
- Open collar
- Patch pocket
- Side vents
- Open hem

### CARE INSTRUCTIONS

Machine wash cold with like colors. Mild detergent. Only non-chlorine bleach. Tumble dry low. Remove promptly. Cool iron if necessary.

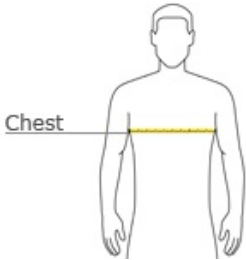


front



back

### HOW TO MEASURE



#### CHEST

With arms down at sides, measure around the upper body, under arms and over the fullest part of the chest.

### SIZE CHART

	XS	S	M	L	XL	2XL	3XL	4XL
Chest	32-34	35-37	38-40	41-43	44-46	47-49	50-53	54-57
Neck	14 1/2 - 15	15 - 15 1/2	15 1/2 - 16	16 - 16 1/2	16 1/2 - 17	17 - 17 1/2	17 1/2 - 18	18 - 18 1/2

### COLOR INFORMATION



Black  
PMS Process Black  
C



Blue  
PMS 646 C



Celery  
PMS 5787 C



Ivory  
PMS WmGy 1 C